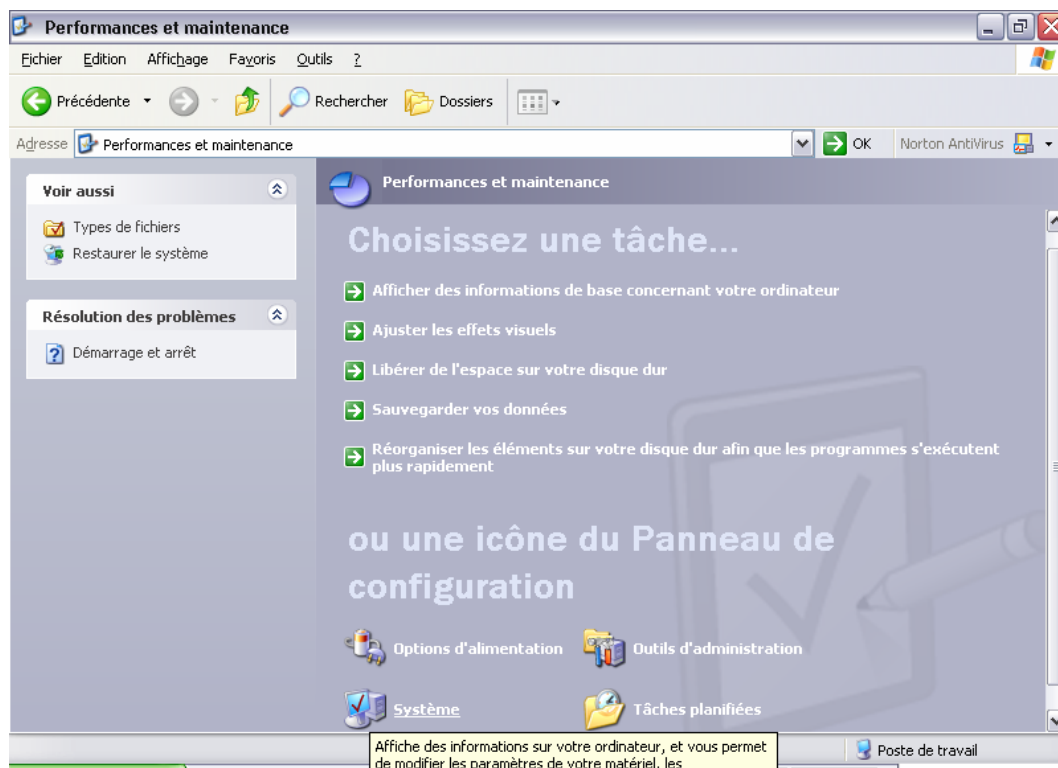


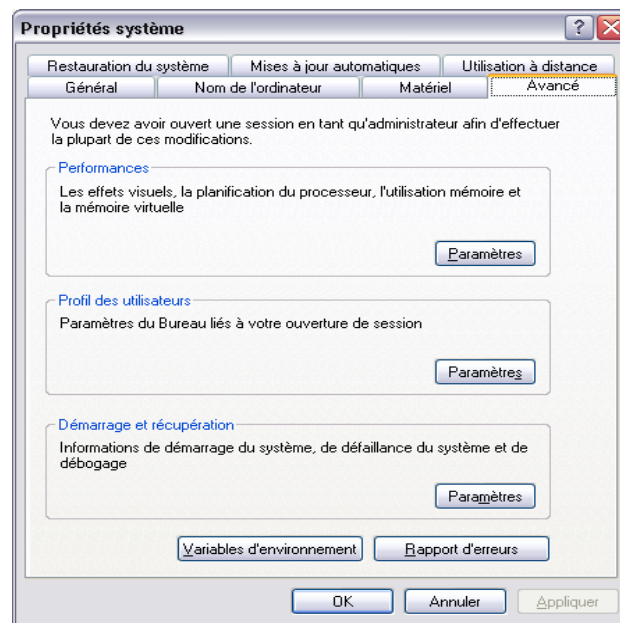
Parametrize Windows XP

1. First of all create a c:\temp directory
2. Open the configuration panel (start configuration panel)
If the configuration panel is in a categories display mode as shown on picture 1 :
Click on " Performances and maintenance "
Click on "system" (at the bottom of the window)
If the configuration panel is in a classic display mode :
Click on "system"



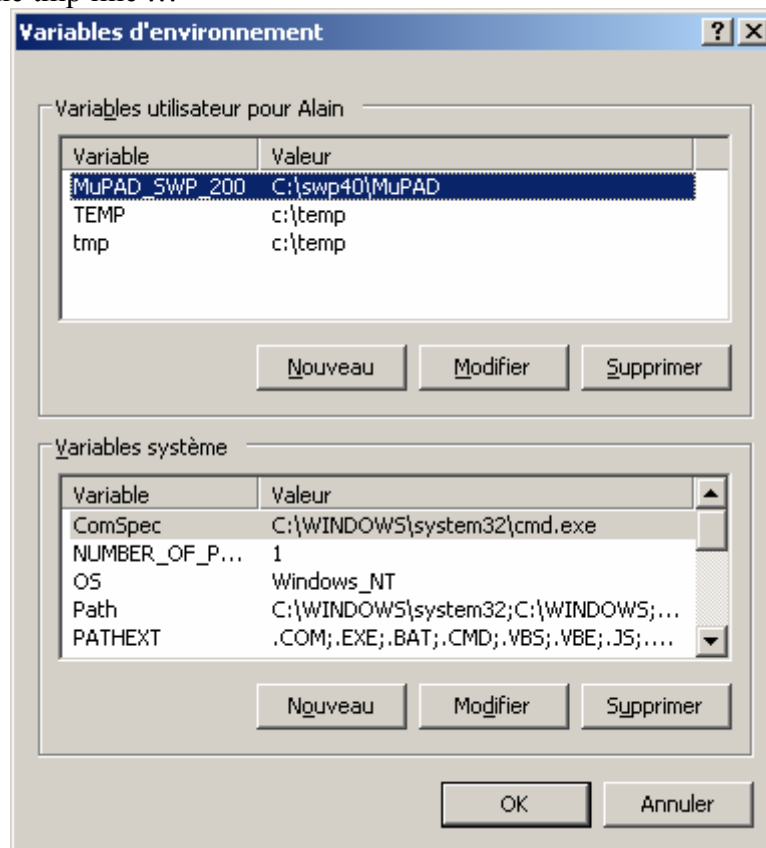
Picture 1

In the dialog box which appears (picture 2), click on the "Advanced" tab and then on the "environment variables" button



Picture 2

Add (or replace) two users variables tmp and temp as shown on picture 3
To do so click on the temp line and then on "Modify".
Do the same with the tmp line ...



Picture 3

You need to restart Windows for the changes to be effective

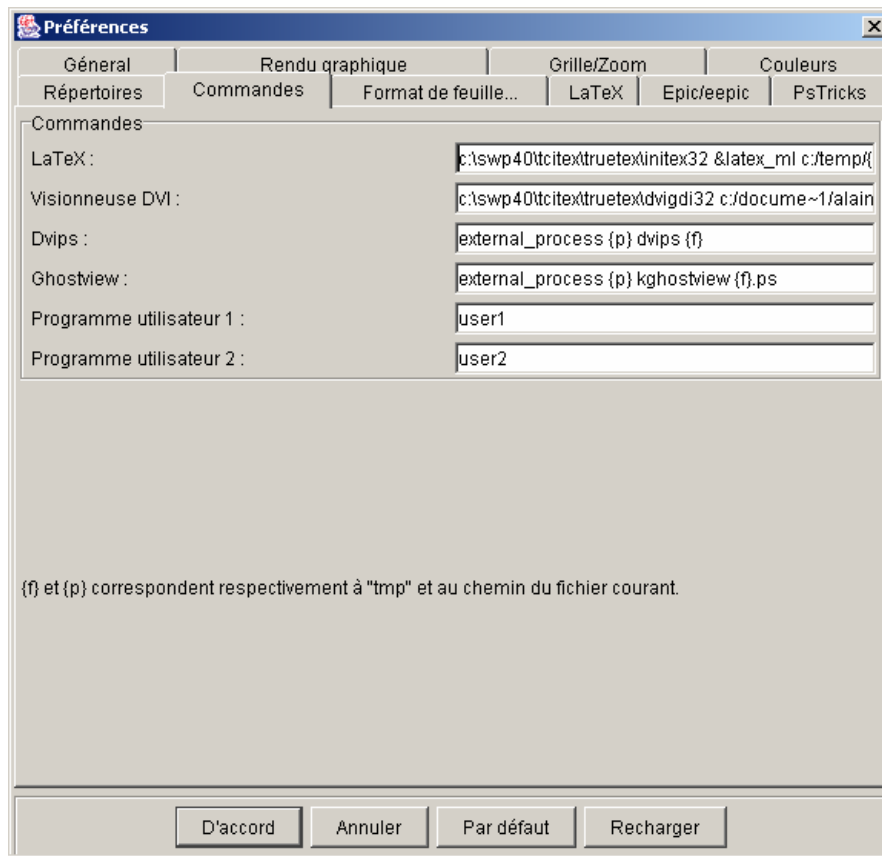
Parametrize JpicEdt (picture 4)

Open the preferences window. Begin by filling in the line Latex

c:\swp40\tcitex\truetex\initex32 latex_ml c: / temp / {f}

Then fill in the Viewer dvi line : **c:\swp40\tcitex\truetex\dvigdi32 c: / docume~1 / alain / {f}**

Of course you will replace “alain” by your user name (a blink in the explorer will help you but this name should appear during every time you launch xp)



Picture 4

Remarks

1. Be careful when you write the files names under the JpicEdt interface: separators are / and not \
2. Do not write c:\documents and settings\ but c:\docume~1\
3. Initex and truetex are not appropriate to open pstricks files. You need to install dvips (included in miktex) and ghostview.